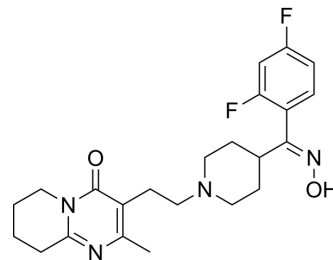


Risperidone E-oxime

Cat. No.:	HY-135194
CAS No.:	691007-09-7
Molecular Formula:	C ₂₃ H ₂₈ F ₂ N ₄ O ₂
Molecular Weight:	430.49
Target:	Drug Metabolite
Pathway:	Metabolic Enzyme/Protease
Storage:	Please store the product under the recommended conditions in the Certificate of Analysis.



BIOLOGICAL ACTIVITY

Description

Risperidone E-oxime is an impurity of Risperidone^[1]. Risperidone is a serotonin 5-HT₂ receptor blocker, P-Glycoprotein inhibitor and potent dopamine D₂ receptor antagonist, with K_is of 4.8, 5.9 nM for 5-HT_{2A} and dopamine D₂ receptor, respectively^{[2][3]}.

REFERENCES

- [1]. Pavel Slanina, et al. Process for making risperidone and intermediates therefor. US20040097523A1.
- [2]. Nyberg S, et al. 5-HT₂ and D₂ dopamine receptor occupancy in the living human brain. A PET study with risperidone. *Psychopharmacology (Berl)*. 1993;110(3):265-72.
- [3]. Zhu HJ, et al. Risperidone and paliperidone inhibit p-glycoprotein activity in vitro. *Neuropsychopharmacology*. 2007 Apr;32(4):757-64.

Caution: Product has not been fully validated for medical applications. For research use only.

Tel: 609-228-6898

Fax: 609-228-5909

E-mail: tech@MedChemExpress.com

Address: 1 Deer Park Dr, Suite Q, Monmouth Junction, NJ 08852, USA