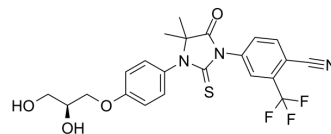


## Rezvilutamide

<b>Cat. No.:</b>	HY-137448		
<b>CAS No.:</b>	1572045-62-5		
<b>Molecular Formula:</b>	C <sub>22</sub> H <sub>20</sub> F <sub>3</sub> N <sub>3</sub> O <sub>4</sub> S		
<b>Molecular Weight:</b>	479.47		
<b>Target:</b>	Androgen Receptor		
<b>Pathway:</b>	Others		
<b>Storage:</b>	Powder	-20°C	3 years
		4°C	2 years
	In solvent	-80°C	6 months
		-20°C	1 month



### SOLVENT & SOLUBILITY

#### In Vitro

DMSO : 100 mg/mL (208.56 mM; Need ultrasonic)

Concentration	Solvent	Mass		
		1 mg	5 mg	10 mg
Preparing Stock Solutions	1 mM	2.0856 mL	10.4282 mL	20.8564 mL
	5 mM	0.4171 mL	2.0856 mL	4.1713 mL
	10 mM	0.2086 mL	1.0428 mL	2.0856 mL

Please refer to the solubility information to select the appropriate solvent.

#### In Vivo

- Add each solvent one by one: 10% DMSO >> 40% PEG300 >> 5% Tween-80 >> 45% saline  
Solubility: ≥ 2.5 mg/mL (5.21 mM); Clear solution
- Add each solvent one by one: 10% DMSO >> 90% (20% SBE-β-CD in saline)  
Solubility: ≥ 2.5 mg/mL (5.21 mM); Clear solution
- Add each solvent one by one: 10% DMSO >> 90% corn oil  
Solubility: ≥ 2.5 mg/mL (5.21 mM); Clear solution

### BIOLOGICAL ACTIVITY

#### Description

Rezvilutamide (SHR3680) is an androgen receptor antagonist. Rezvilutamide (SHR3680) is used for the study of prostate cancer<sup>[1][2]</sup>.

### REFERENCES

[1]. SangjunYoo, et al. New drugs in prostate cancer. Prostate International Volume 4, Issue 2, June 2016, Pages 37-42.

**Caution: Product has not been fully validated for medical applications. For research use only.**

Tel: 609-228-6898

Fax: 609-228-5909

E-mail: [tech@MedChemExpress.com](mailto:tech@MedChemExpress.com)

Address: 1 Deer Park Dr, Suite Q, Monmouth Junction, NJ 08852, USA