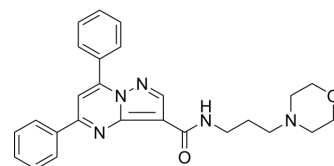


Reversan

Cat. No.:	HY-107643		
CAS No.:	313397-13-6		
Molecular Formula:	C ₂₆ H ₂₇ N ₅ O ₂		
Molecular Weight:	441.52		
Target:	P-glycoprotein		
Pathway:	Membrane Transporter/Ion Channel		
Storage:	Powder	-20°C	3 years
		4°C	2 years
	In solvent	-80°C	6 months
		-20°C	1 month



SOLVENT & SOLUBILITY

In Vitro	DMSO : 13 mg/mL (29.44 mM; Need ultrasonic)				
		Solvent Concentration	Mass 1 mg	5 mg	10 mg
	Preparing Stock Solutions	1 mM	2.2649 mL	11.3245 mL	22.6490 mL
		5 mM	0.4530 mL	2.2649 mL	4.5298 mL
10 mM		0.2265 mL	1.1325 mL	2.2649 mL	
Please refer to the solubility information to select the appropriate solvent.					
In Vivo	1. Add each solvent one by one: 10% DMSO >> 90% (20% SBE-β-CD in saline) Solubility: 1.56 mg/mL (3.53 mM); Suspended solution; Need ultrasonic				

BIOLOGICAL ACTIVITY

Description	Reversan (CBLC4H10) is a potent and nontoxic multidrug resistance-associated protein 1 (MRP1) and P-glycoprotein (Pgp) inhibitor ^{[1][2]} .
IC₅₀ & Target	Multidrug resistance-associated protein 1, P-glycoprotein ^[1]

REFERENCES

[1]. Tivnan A, et al. Inhibition of multidrug resistance protein 1 (MRP1) improves chemotherapy drug response in primary and recurrent glioblastoma multiforme. *Front Neurosci.* 2015 Jun 16;9:218.

[2]. Burkhart CA, et al. Small-molecule multidrug resistance-associated protein 1 inhibitor reversan increases the therapeutic index of chemotherapy in mouse models of neuroblastoma. *Cancer Res.* 2009 Aug 15;69(16):6573-80.

Caution: Product has not been fully validated for medical applications. For research use only.

Tel: 609-228-6898

Fax: 609-228-5909

E-mail: tech@MedChemExpress.com

Address: 1 Deer Park Dr, Suite Q, Monmouth Junction, NJ 08852, USA