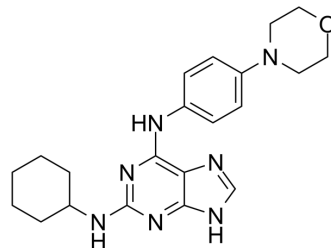


Retreversine

Cat. No.:	HY-113894
CAS No.:	1028332-91-3
Molecular Formula:	C ₂₁ H ₂₇ N ₇ O
Molecular Weight:	393.49
Target:	Aurora Kinase
Pathway:	Cell Cycle/DNA Damage; Epigenetics
Storage:	Please store the product under the recommended conditions in the Certificate of Analysis.



BIOLOGICAL ACTIVITY

Description

Retreversine is an inactive control for Reversine. Reversine is a novel class of ATP-competitive Aurora kinase inhibitor^[1].

REFERENCES

[1]. Bijian K, et, al. Targeting focal adhesion turnover in invasive breast cancer cells by the purine derivative reversine. Br J Cancer. 2013 Nov 26;109(11):2810-8.

Caution: Product has not been fully validated for medical applications. For research use only.

Tel: 609-228-6898

Fax: 609-228-5909

E-mail: tech@MedChemExpress.com

Address: 1 Deer Park Dr, Suite Q, Monmouth Junction, NJ 08852, USA