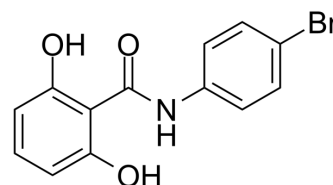


Resorantel

Cat. No.:	HY-121477		
CAS No.:	20788-07-2		
Molecular Formula:	C ₁₃ H ₁₀ BrNO ₃		
Molecular Weight:	308.13		
Target:	Parasite		
Pathway:	Anti-infection		
Storage:	Powder	-20°C	3 years
		4°C	2 years
	In solvent	-80°C	6 months
		-20°C	1 month



SOLVENT & SOLUBILITY

In Vitro

DMSO : 250 mg/mL (811.35 mM; Need ultrasonic)

Concentration	Solvent	Mass		
		1 mg	5 mg	10 mg
Preparing Stock Solutions	1 mM	3.2454 mL	16.2269 mL	32.4538 mL
	5 mM	0.6491 mL	3.2454 mL	6.4908 mL
	10 mM	0.3245 mL	1.6227 mL	3.2454 mL

Please refer to the solubility information to select the appropriate solvent.

BIOLOGICAL ACTIVITY

Description

Resorantel is an anthelmintic^[1]. Resorantel is used in the research of paramphistomiasis in cattle and sheep and has also been used for the research of *G. aegypticus*^[2].

In Vivo

Resorantel (65 mg/kg, a single oral dose) possesses efficacy against paramphistomiasis in naturally infected sheep^[1]. MCE has not independently confirmed the accuracy of these methods. They are for reference only.

Animal Model:	Five flocks of sheep in different villages of Haryana ^[1] .
Dosage:	65 mg/kg.
Administration:	A single oral dose.
Result:	None of the treated sheep died of enteric paramphistomiasis. The clinical signs disappeared within 2 to 3 days of the treatment and their appetite and general condition improved. No ill effects of the drug were noticed. Of the untreated sheep, 35 % died with a

range of 24-52 % in the different flocks. Many of the other untreated sheep continued to exhibit clinical signs of paramphistomiasis.

REFERENCES

- [1]. R P Gupta, et al. Efficacy of resorantel against paramphistomiasis in naturally infected sheep. Trop Anim Health Prod. 1981 Feb;13(1):35-6.
- [2]. Swan GE. The pharmacology of halogenated salicylanilides and their anthelmintic use in animals. J S Afr Vet Assoc. 1999;70(2):61-70.
-

Caution: Product has not been fully validated for medical applications. For research use only.

Tel: 609-228-6898

Fax: 609-228-5909

E-mail: tech@MedChemExpress.com

Address: 1 Deer Park Dr, Suite Q, Monmouth Junction, NJ 08852, USA