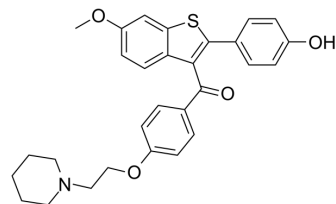


Raloxifene 6-Monomethyl Ether

Cat. No.:	HY-135584
CAS No.:	178451-13-3
Molecular Formula:	C ₂₉ H ₂₉ NO ₄ S
Molecular Weight:	487.61
Target:	Estrogen Receptor/ERR
Pathway:	Others
Storage:	Please store the product under the recommended conditions in the Certificate of Analysis.



BIOLOGICAL ACTIVITY

Description	Raloxifene 6-Monomethyl Ether (Compound 7) is a Raloxifene derivative that inhibits estrogen receptor α . Raloxifene 4-Monomethyl Ether inhibits MCF-7 cells with an IC ₅₀ of 250 nM and a pIC ₅₀ of 6.6 ^[1] .
In Vitro	Raloxifene 6-Monomethyl Ether (Compound 7) is a Raloxifene derivative with a methoxy group on C6. Raloxifene 6-Monomethyl Ether holds poor IC _{sub>50} >50 value because of disruption to the hydrogen bond network and steric disfavor ^[1] . MCE has not independently confirmed the accuracy of these methods. They are for reference only.

REFERENCES

[1]. Chang YH, et al. Computational study of estrogen receptor-alpha antagonist with three-dimensional quantitative structure-activity relationship, support vector regression, and linear regression methods. Int J Med Chem. 2013;2013:743139.

Caution: Product has not been fully validated for medical applications. For research use only.

Tel: 609-228-6898

Fax: 609-228-5909

E-mail: tech@MedChemExpress.com

Address: 1 Deer Park Dr, Suite Q, Monmouth Junction, NJ 08852, USA