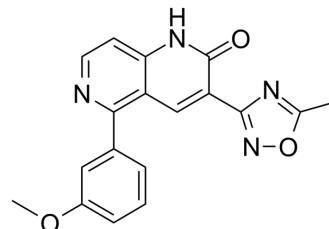


Radequinil

| | |
|---------------------------|--|
| Cat. No.: | HY-106025 |
| CAS No.: | 219846-31-8 |
| Molecular Formula: | C ₁₈ H ₁₄ N ₄ O ₃ |
| Molecular Weight: | 334.33 |
| Target: | GABA Receptor |
| Pathway: | Membrane Transporter/Ion Channel; Neuronal Signaling |
| Storage: | 4°C, sealed storage, away from moisture and light * In solvent : -80°C, 6 months; -20°C, 1 month (sealed storage, away from moisture and light) |



SOLVENT & SOLUBILITY

| | | | | | | |
|---|--|----------------------|-------------|-------------|-------------|--------------|
| In Vitro | DMSO : 10 mg/mL (29.91 mM); ultrasonic and warming and heat to 60°C | | | | | |
| | Preparing Stock Solutions | Solvent | Mass | 1 mg | 5 mg | 10 mg |
| | | Concentration | | | | |
| | | 1 mM | | 2.9911 mL | 14.9553 mL | 29.9106 mL |
| | | 5 mM | | 0.5982 mL | 2.9911 mL | 5.9821 mL |
| | 10 mM | | 0.2991 mL | 1.4955 mL | 2.9911 mL | |
| Please refer to the solubility information to select the appropriate solvent. | | | | | | |
| In Vivo | 1. Add each solvent one by one: 10% DMSO >> 40% PEG300 >> 5% Tween-80 >> 45% saline Solubility: ≥ 1 mg/mL (2.99 mM); Clear solution | | | | | |
| | 2. Add each solvent one by one: 10% DMSO >> 90% (20% SBE-β-CD in saline) Solubility: ≥ 1 mg/mL (2.99 mM); Clear solution | | | | | |
| | 3. Add each solvent one by one: 10% DMSO >> 90% corn oil Solubility: ≥ 1 mg/mL (2.99 mM); Clear solution | | | | | |

BIOLOGICAL ACTIVITY

| | |
|-------------------------------------|---|
| Description | Radequinil (AC-3933) is a benzodiazepine receptor (BzR) partial inverse agonist. AC-3933 binds to GABA(-) and GABA(+) ligand with K _i s of 5.15 and 6.11 nM, respectively ^[1] . |
| IC₅₀ & Target | Ki: 5.15±0.39 nM (GABA(-) ligand), 6.11±0.26 nM (GABA(+) ligand) ^[1] |

REFERENCES

Caution: Product has not been fully validated for medical applications. For research use only.

Tel: 609-228-6898

Fax: 609-228-5909

E-mail: tech@MedChemExpress.com

Address: 1 Deer Park Dr, Suite Q, Monmouth Junction, NJ 08852, USA