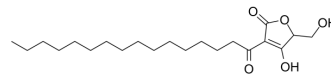


(Rac)-RK-682

Cat. No.:	HY-135564B
CAS No.:	154639-24-4
Molecular Formula:	C ₂₁ H ₃₆ O ₅
Molecular Weight:	368.51
Target:	Phosphatase
Pathway:	Metabolic Enzyme/Protease
Storage:	Please store the product under the recommended conditions in the Certificate of Analysis.



BIOLOGICAL ACTIVITY

Description	(Rac)-RK-682, a racemate of RK-682, is a protein tyrosine phosphatases (PTPases) inhibitor. (Rac)-RK-682 inhibits protein tyrosine phosphatase 1B (PTP-1B), low molecular weight protein tyrosine phosphatases (LMW-PTP), and cell division cycle 25B (CDC-25B) with IC ₅₀ s of 8.6 μM, 12.4 μM, and 0.7 μM, respectively ^[1] .
IC ₅₀ & Target	IC ₅₀ : 8.6 μM (PTP-1B), 12.4 μM (LMW-PTP), and 0.7 μM (CDC-25B) ^[1]

REFERENCES

[1]. Vânia M T Carneiro, et al. Is RK-682 a promiscuous enzyme inhibitor? Synthesis and in vitro evaluation of protein tyrosine phosphatase inhibition of racemic RK-682 and analogues. *Eur J Med Chem.* 2015 Jun 5;97:42-54.

Caution: Product has not been fully validated for medical applications. For research use only.

Tel: 609-228-6898

Fax: 609-228-5909

E-mail: tech@MedChemExpress.com

Address: 1 Deer Park Dr, Suite Q, Monmouth Junction, NJ 08852, USA