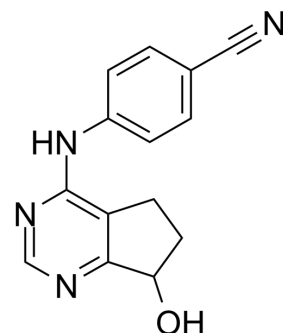


## RS 8359

Cat. No.:	HY-14260		
CAS No.:	105365-76-2		
Molecular Formula:	C <sub>14</sub> H <sub>12</sub> N <sub>4</sub> O		
Molecular Weight:	252.27		
Target:	Monoamine Oxidase		
Pathway:	Neuronal Signaling		
Storage:	Powder	-20°C	3 years
		4°C	2 years
	In solvent	-80°C	6 months
		-20°C	1 month



### SOLVENT & SOLUBILITY

#### In Vitro

DMSO : 50 mg/mL (198.20 mM; ultrasonic and warming and heat to 80°C)

Concentration	Solvent	Mass		
		1 mg	5 mg	10 mg
Preparing Stock Solutions	1 mM	3.9640 mL	19.8200 mL	39.6401 mL
	5 mM	0.7928 mL	3.9640 mL	7.9280 mL
	10 mM	0.3964 mL	1.9820 mL	3.9640 mL

Please refer to the solubility information to select the appropriate solvent.

### BIOLOGICAL ACTIVITY

#### Description

RS 8359 is a selective and reversible MAO-A inhibitor, with antidepressant activity.

#### In Vivo

RS 8359 shows relatively little effect upon blood pressure when administered together with tyramine. RS-8359 shows little affinity for the common central nervous system receptors and little anticholinergic effect<sup>[1]</sup>.

MCE has not independently confirmed the accuracy of these methods. They are for reference only.

### REFERENCES

[1]. Iwata N, et al. Pharmacology of the new reversible inhibitor of monoamine oxidase A, RS-8359. Int Clin Psychopharmacol. 1997 Sep;12 Suppl 5:S3-10.

---

**Caution: Product has not been fully validated for medical applications. For research use only.**

Tel: 609-228-6898

Fax: 609-228-5909

E-mail: [tech@MedChemExpress.com](mailto:tech@MedChemExpress.com)

Address: 1 Deer Park Dr, Suite Q, Monmouth Junction, NJ 08852, USA