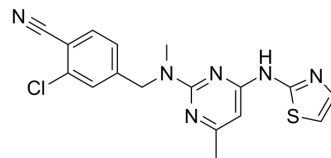


ROS1-IN-1

Cat. No.:	HY-150974
CAS No.:	2883232-34-4
Molecular Formula:	C ₁₇ H ₁₅ ClN ₆ S
Molecular Weight:	370.86
Target:	ROS Kinase
Pathway:	Protein Tyrosine Kinase/RTK
Storage:	Please store the product under the recommended conditions in the Certificate of Analysis.



BIOLOGICAL ACTIVITY

Description	ROS1-IN-1 (Compound 31) is a potent and selective ROS1 kinase inhibitor with an IC ₅₀ of 0.097 μM ^[1] .
IC ₅₀ & Target	IC ₅₀ : 0.097 μM (ROS1) ^[1]
In Vitro	ROS1-IN-1 (Compound 31) (1 μM) does not inhibit any other kinase at >50%, making it a truly selective starting point for optimization against ROS1 ^[1] . MCE has not independently confirmed the accuracy of these methods. They are for reference only.

REFERENCES

[1]. Petrović D, et al. Virtual Screening in the Cloud Identifies Potent and Selective ROS1 Kinase Inhibitors. J Chem Inf Model. 2022 Aug 3.

Caution: Product has not been fully validated for medical applications. For research use only.

Tel: 609-228-6898

Fax: 609-228-5909

E-mail: tech@MedChemExpress.com

Address: 1 Deer Park Dr, Suite Q, Monmouth Junction, NJ 08852, USA