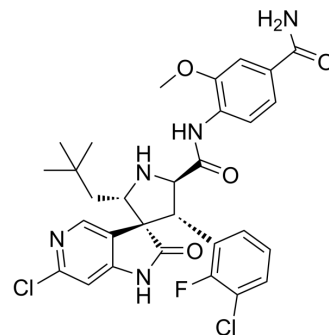


RO 2468

Cat. No.:	HY-12579
CAS No.:	1360821-21-1
Molecular Formula:	C ₃₀ H ₃₀ Cl ₂ FN ₅ O ₄
Molecular Weight:	614.49
Target:	MDM-2/p53
Pathway:	Apoptosis
Storage:	Please store the product under the recommended conditions in the Certificate of Analysis.



BIOLOGICAL ACTIVITY

Description

RO 2468 is a potent, orally active and selective p53-MDM2 inhibitor. RO 2468 has anti-proliferative active. RO 2468 suppresses c growth in SJS1 osteosarcoma models without obvious toxicity^[1].

REFERENCES

[1]. Zhang Z, et, al. Discovery of Potent and Orally Active p53-MDM2 Inhibitors RO5353 and RO2468 for Potential Clinical Development. ACS Med Chem Lett. 2013 Dec 29;5(2):124-7.

Caution: Product has not been fully validated for medical applications. For research use only.

Tel: 609-228-6898

Fax: 609-228-5909

E-mail: tech@MedChemExpress.com

Address: 1 Deer Park Dr, Suite Q, Monmouth Junction, NJ 08852, USA