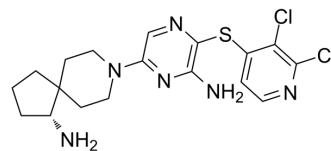


RMC-3943

Cat. No.:	HY-141524
CAS No.:	1801764-60-2
Molecular Formula:	C ₁₈ H ₂₂ Cl ₂ N ₆ S
Molecular Weight:	425.38
Target:	Phosphatase
Pathway:	Metabolic Enzyme/Protease
Storage:	Please store the product under the recommended conditions in the Certificate of Analysis.



BIOLOGICAL ACTIVITY

Description	RMC-3943 is an allosteric SHP2 inhibitor (inhibition of full-length SHP2 in biochemical assay, IC ₅₀ = 2.19 nM) ^[1] .								
In Vitro	<p>RMC-3943 inhibits pERK in PC9 cells, with an IC₅₀ of 35.5 nM^[1].</p> <p>RMC-3943 (0-10 μM) produces a concentration-dependent inhibition of proliferation of SK-MEL-113 cells^[1].</p> <p>MCE has not independently confirmed the accuracy of these methods. They are for reference only.</p> <p>Cell Viability Assay</p> <table border="1"> <tr> <td>Cell Line:</td> <td>SK-MEL-113 cells^[1].</td> </tr> <tr> <td>Concentration:</td> <td>0-10 μM.</td> </tr> <tr> <td>Incubation Time:</td> <td>7 days.</td> </tr> <tr> <td>Result:</td> <td>Inhibited cell proliferation.</td> </tr> </table>	Cell Line:	SK-MEL-113 cells ^[1] .	Concentration:	0-10 μM.	Incubation Time:	7 days.	Result:	Inhibited cell proliferation.
Cell Line:	SK-MEL-113 cells ^[1] .								
Concentration:	0-10 μM.								
Incubation Time:	7 days.								
Result:	Inhibited cell proliferation.								

REFERENCES

[1]. Efficacy of SHP2 phosphatase inhibition in cancers with nucleotide-cycling oncogenic RAS, RAS-GTP dependent oncogenic BRAF and NF1 loss. BioRxiv. 2021 Aug.

Caution: Product has not been fully validated for medical applications. For research use only.

Tel: 609-228-6898

Fax: 609-228-5909

E-mail: tech@MedChemExpress.com

Address: 1 Deer Park Dr, Suite Q, Monmouth Junction, NJ 08852, USA