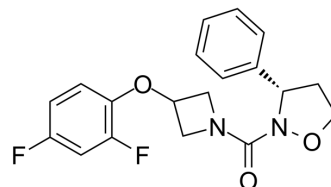


## RIP1 kinase inhibitor 6

Cat. No.:	HY-153436
CAS No.:	2428401-62-9
Molecular Formula:	C <sub>19</sub> H <sub>18</sub> F <sub>2</sub> N <sub>2</sub> O <sub>3</sub>
Molecular Weight:	360.35
Target:	RIP kinase
Pathway:	Apoptosis
Storage:	Please store the product under the recommended conditions in the Certificate of Analysis.



### BIOLOGICAL ACTIVITY

#### Description

RIP1 kinase inhibitor 6 is a potent and selective RIP1 kinase inhibitor with an IC<sub>50</sub> of < 100 nM in human RIP1 kinase assay. RIP1 kinase inhibitor 6 is extracted from patent WO2020103884, example 80<sup>[1]</sup>.

### REFERENCES

[1]. Yaning SU, et al. Cyclic Ureas. Patent WO2020103884.

**Caution: Product has not been fully validated for medical applications. For research use only.**

Tel: 609-228-6898

Fax: 609-228-5909

E-mail: tech@MedChemExpress.com

Address: 1 Deer Park Dr, Suite Q, Monmouth Junction, NJ 08852, USA