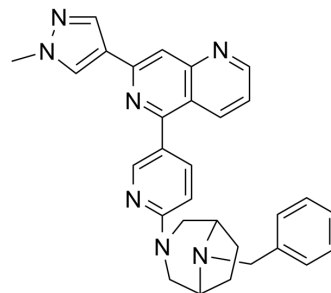


RET-IN-6

Cat. No.:	HY-145024
CAS No.:	2715208-83-4
Molecular Formula:	C ₃₀ H ₂₉ N ₇
Molecular Weight:	487.6
Target:	RET
Pathway:	Protein Tyrosine Kinase/RTK
Storage:	Please store the product under the recommended conditions in the Certificate of Analysis.



BIOLOGICAL ACTIVITY

Description	RET-IN-6 is a potent RET (rearranged during transfection) inhibitor with an IC ₅₀ of 4.57 nM (CN113461670A, compound 321) [1].
--------------------	---

REFERENCES

[1]. Novel compounds as inhibitors of rearrangement kinase during transfection. CN113461670A.

Caution: Product has not been fully validated for medical applications. For research use only.

Tel: 609-228-6898

Fax: 609-228-5909

E-mail: tech@MedChemExpress.com

Address: 1 Deer Park Dr, Suite Q, Monmouth Junction, NJ 08852, USA