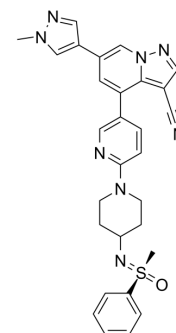


RET-IN-10

Cat. No.:	HY-143615
CAS No.:	2662622-44-6
Molecular Formula:	C ₂₉ H ₂₈ N ₈ OS
Molecular Weight:	536.65
Target:	RET
Pathway:	Protein Tyrosine Kinase/RTK
Storage:	Please store the product under the recommended conditions in the Certificate of Analysis.



BIOLOGICAL ACTIVITY

Description

RET-IN-10 is a potent inhibitor of RET. RET loss of function mutations leads to Hirschsprung's disease, while its gain of function mutations is associated with a variety of human tumors. RET-IN-10 has the potential for the research of cancer diseases (extracted from patent WO2021135938A1, compound 18)^[1].

REFERENCES

[1]. Anhu Li. Heterocyclic sulfoximine compounds and intermediates thereof, methods of preparation and applications. Patent WO2021135938A1.

Caution: Product has not been fully validated for medical applications. For research use only.

Tel: 609-228-6898

Fax: 609-228-5909

E-mail: tech@MedChemExpress.com

Address: 1 Deer Park Dr, Suite Q, Monmouth Junction, NJ 08852, USA