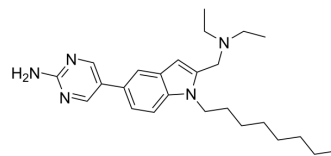


## R1-11

Cat. No.:	HY-149715
Molecular Formula:	C <sub>25</sub> H <sub>37</sub> N <sub>5</sub>
Molecular Weight:	407.59
Target:	ICMT
Pathway:	GPCR/G Protein
Storage:	Please store the product under the recommended conditions in the Certificate of Analysis.



## BIOLOGICAL ACTIVITY

### Description

R1-11 is an indole ICMT inhibitor with an IC<sub>50</sub> of 0.6 μM and has anticancer activity. R1-11 inhibits MDA-MB231 and PC3 cells with IC<sub>50</sub>s of 2.2 μM and 2.0 μM, respectively<sup>[1]</sup>.

## REFERENCES

[1]. Yang WS et al. Isoprenyl carboxyl methyltransferase inhibitors: a brief review including recent patents. *Amino Acids*. 2017 Sep;49(9):1469-1485.

**Caution: Product has not been fully validated for medical applications. For research use only.**

Tel: 609-228-6898

Fax: 609-228-5909

E-mail: tech@MedChemExpress.com

Address: 1 Deer Park Dr, Suite Q, Monmouth Junction, NJ 08852, USA