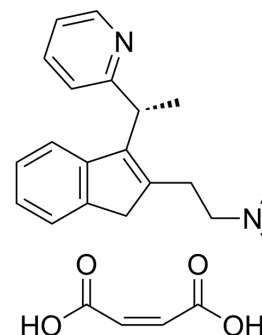


(R)-(+)-Dimethindene maleate

Cat. No.:	HY-107647A
CAS No.:	136152-64-2
Molecular Formula:	C ₂₄ H ₂₈ N ₂ O ₄
Molecular Weight:	408.49
Target:	Histamine Receptor
Pathway:	GPCR/G Protein; Immunology/Inflammation; Neuronal Signaling
Storage:	4°C, stored under nitrogen, away from moisture * In solvent : -80°C, 6 months; -20°C, 1 month (stored under nitrogen, away from moisture)



SOLVENT & SOLUBILITY

In Vitro

DMSO : 100 mg/mL (244.80 mM; Need ultrasonic)

Concentration	Mass		
	1 mg	5 mg	10 mg
1 mM	2.4480 mL	12.2402 mL	24.4804 mL
5 mM	0.4896 mL	2.4480 mL	4.8961 mL
10 mM	0.2448 mL	1.2240 mL	2.4480 mL

Please refer to the solubility information to select the appropriate solvent.

BIOLOGICAL ACTIVITY

Description

(R)-(+)-Dimethindene maleate is an orally active H₁-receptor blocker with antihistaminic properties in pigs^[1].

IC₅₀ & Target

H₁ Receptor
7.7 (pA2)

In Vitro

(R)-(+)-Dimethindene maleate possesses membrane-stabilising effect^[1].
MCE has not independently confirmed the accuracy of these methods. They are for reference only.

In Vivo

(R)-(+)-Dimethindene maleate (10 mL/kg; i.g.; once) shows antihistaminic activity with an ED₅₀ of 2.73 mg/kg in pigs^[1].
MCE has not independently confirmed the accuracy of these methods. They are for reference only.

Animal Model:	Male guinea-pigs ^[1]
Dosage:	10 mL/kg
Administration:	Oral gavage, once

Result:

The ED₅₀-value for a protection from a fatal histamine shock was calculated as 2.73 mg/kg when administered orally 1 h before the injection of histamine. The calculated oral anti-anaphylactic ED₅₀-value was found to be >31.6mg/kg. The oral LD₅₀-values was found to be 988 mg/kg.

REFERENCES

[1]. Leuschner J, et al. Evaluation of the dose-effect curves of dimethindene maleate enantiomers in various animal models. Agents and Actions, 1992, 36(2): C431-C433.

Caution: Product has not been fully validated for medical applications. For research use only.

Tel: 609-228-6898

Fax: 609-228-5909

E-mail: tech@MedChemExpress.com

Address: 1 Deer Park Dr, Suite Q, Monmouth Junction, NJ 08852, USA