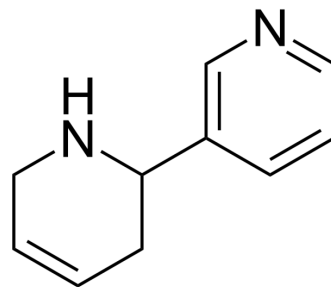


(R,S)-Anatabine

Cat. No.:	HY-126047A		
CAS No.:	2743-90-0		
Molecular Formula:	C ₁₀ H ₁₂ N ₂		
Molecular Weight:	160.22		
Target:	Others		
Pathway:	Others		
Storage:	Pure form	-20°C	3 years
		4°C	2 years
	In solvent	-80°C	6 months
		-20°C	1 month



SOLVENT & SOLUBILITY

In Vitro	DMSO : 125 mg/mL (780.18 mM; Need ultrasonic)			
		Solvent Concentration	Mass	
			1 mg	5 mg
			10 mg	
	Preparing Stock Solutions	1 mM	5 mM	10 mM
		6.2414 mL	31.2071 mL	62.4142 mL
		1.2483 mL	6.2414 mL	12.4828 mL
		0.6241 mL	3.1207 mL	6.2414 mL
Please refer to the solubility information to select the appropriate solvent.				
In Vivo	1. Add each solvent one by one: 10% DMSO >> 40% PEG300 >> 5% Tween-80 >> 45% saline Solubility: ≥ 2.08 mg/mL (12.98 mM); Clear solution			
	2. Add each solvent one by one: 10% DMSO >> 90% (20% SBE-β-CD in saline) Solubility: ≥ 2.08 mg/mL (12.98 mM); Clear solution			
	3. Add each solvent one by one: 10% DMSO >> 90% corn oil Solubility: ≥ 2.08 mg/mL (12.98 mM); Clear solution			

BIOLOGICAL ACTIVITY

Description	(R,S)-Anatabine is a minor tobacco alkaloid found in the Solanaceae family of plants that can be used as a specific marker for the detection of tobacco use ^[1] .
--------------------	--

REFERENCES

[1]. Lai FY, et al. Levels of 4-(methylnitrosamino)-1-(3-pyridyl)-1-butanone (NNK) in raw wastewater as an innovative perspective for investigating population-wide exposure to third-hand smoke. Sci Rep. 2018 Sep 5;8(1):13254.

Caution: Product has not been fully validated for medical applications. For research use only.

Tel: 609-228-6898

Fax: 609-228-5909

E-mail: tech@MedChemExpress.com

Address: 1 Deer Park Dr, Suite Q, Monmouth Junction, NJ 08852, USA