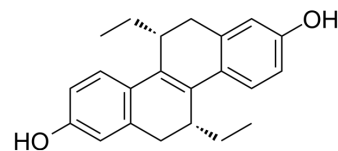


(R,R)-THC

Cat. No.:	HY-103451		
CAS No.:	221368-54-3		
Molecular Formula:	C ₂₂ H ₂₄ O ₂		
Molecular Weight:	320.42		
Target:	Estrogen Receptor/ERR		
Pathway:	Vitamin D Related/Nuclear Receptor		
Storage:	Powder	-20°C	3 years
	In solvent	-80°C	6 months
		-20°C	1 month



BIOLOGICAL ACTIVITY

Description	(R,R)-THC is an ER α agonist and an ER β antagonist, with K _s of 9.0 nM and 3.6 nM for ER α and ER β , respectively. (R,R)-THC has higher relative binding affinity for ER β than ER α with the values of 25 and 3.6 ^[1] .	
IC ₅₀ & Target	ER α	ER β
	9.0 nM (Ki)	3.6 nM (Ki)

REFERENCES

[1]. Sun J, et al. Novel ligands that function as selective estrogens or antiestrogens for estrogen receptor-alpha or estrogen receptor-beta. *Endocrinology*. 1999;140(2):800-804.

Caution: Product has not been fully validated for medical applications. For research use only.

Tel: 609-228-6898

Fax: 609-228-5909

E-mail: tech@MedChemExpress.com

Address: 1 Deer Park Dr, Suite Q, Monmouth Junction, NJ 08852, USA