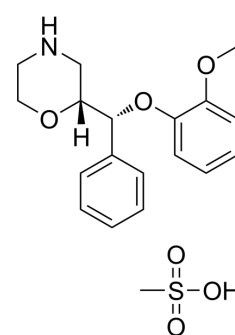


## (R,R)-Reboxetine mesylate

Cat. No.:	HY-14560A
CAS No.:	105017-39-8
Molecular Formula:	C <sub>20</sub> H <sub>27</sub> NO <sub>6</sub> S
Molecular Weight:	409.5
Target:	Adrenergic Receptor; mAChR
Pathway:	GPCR/G Protein; Neuronal Signaling
Storage:	Please store the product under the recommended conditions in the Certificate of Analysis.



### BIOLOGICAL ACTIVITY

<b>Description</b>	(R,R)-Reboxetine mesylate is an antidepressant agent with great bioavailability. (R,R)-Reboxetine is the enantiomer of Reboxetine, which is a selective noradrenaline reuptake inhibitor. Reboxetine consists of (R,R) and (S,S) enantiomer, has low affinity for alpha-adrenergic and muscarinic receptors and low toxicity in animals <sup>[1][2]</sup> .	
<b>IC<sub>50</sub> &amp; Target</b>	α adrenergic receptor	Muscarinic Receptors

### REFERENCES

[1]. Wienkers LC, et al. Cytochrome P-450-mediated metabolism of the individual enantiomers of the antidepressant agent reboxetine in human liver microsomes. Drug Metab Dispos. 1999 Nov;27(11):1334-40.

[2]. Dostert P, et al. Review of the pharmacokinetics and metabolism of reboxetine, a selective noradrenaline reuptake inhibitor. Eur Neuropsychopharmacol. 1997 Apr;7 Suppl 1:S23-35; discussion S71-3.

**Caution: Product has not been fully validated for medical applications. For research use only.**

Tel: 609-228-6898

Fax: 609-228-5909

E-mail: tech@MedChemExpress.com

Address: 1 Deer Park Dr, Suite Q, Monmouth Junction, NJ 08852, USA