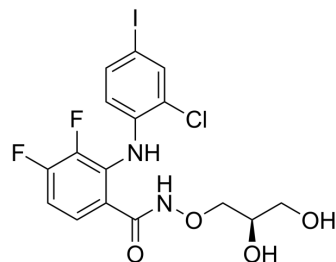


(R)-PD 0325901CL

Cat. No.:	HY-10508
CAS No.:	1003216-77-0
Molecular Formula:	C ₁₆ H ₁₄ ClF ₂ IN ₂ O ₄
Molecular Weight:	498.65
Target:	MEK
Pathway:	MAPK/ERK Pathway
Storage:	Please store the product under the recommended conditions in the Certificate of Analysis.



BIOLOGICAL ACTIVITY

Description

(R)-PD 0325901CL is an isomer of PD 0325901CL. PD 0325901CL is a selective inhibitor of mitogen-activated protein kinase kinase (MEK) involved in cancer research. PD 0325901CL inhibits the growth of cancer cells in vitro and in vivo^[1].

REFERENCES

[1]. Bain J, et al. The selectivity of protein kinase inhibitors: a further update. *Biochem J.* 2007 Dec 15;408(3):297-315.

Caution: Product has not been fully validated for medical applications. For research use only.

Tel: 609-228-6898

Fax: 609-228-5909

E-mail: tech@MedChemExpress.com

Address: 1 Deer Park Dr, Suite Q, Monmouth Junction, NJ 08852, USA