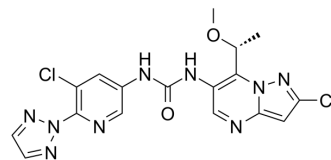


(R)-MLT-985

Cat. No.:	HY-142648A
CAS No.:	1832577-07-7
Molecular Formula:	C ₁₇ H ₁₅ Cl ₂ N ₉ O ₂
Molecular Weight:	448.27
Target:	MALT1
Pathway:	Metabolic Enzyme/Protease; NF-κB
Storage:	Please store the product under the recommended conditions in the Certificate of Analysis.



BIOLOGICAL ACTIVITY

Description

(R)-MLT-985 (compound 11) is a potent MALT1 protease inhibitor with an IC₅₀ of 3 nM. (R)-MLT-985 has an IC₅₀ of 20 nM for MALT1-dependent IL-2 production in Jurkat cells. (R)-MLT-985 suppresses growth and aberrant CARD11/BCL10/MALT1 complex signaling in ABC-DLBCL cells^[1].

REFERENCES

[1]. Jean Quancard, et al. Optimization of the In Vivo Potency of Pyrazolopyrimidine MALT1 Protease Inhibitors by Reducing Metabolism and Increasing Potency in Whole Blood. *J Med Chem.* 2020 Dec 10;63(23):14594-14608.

Caution: Product has not been fully validated for medical applications. For research use only.

Tel: 609-228-6898

Fax: 609-228-5909

E-mail: tech@MedChemExpress.com

Address: 1 Deer Park Dr, Suite Q, Monmouth Junction, NJ 08852, USA