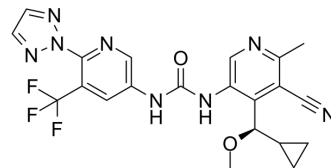


(R)-MALT1-IN-3

Cat. No.:	HY-143422A
CAS No.:	2504229-61-0
Molecular Formula:	C ₂₁ H ₁₉ F ₃ N ₈ O ₂
Molecular Weight:	472.42
Target:	MALT1
Pathway:	Metabolic Enzyme/Protease; NF-κB
Storage:	Please store the product under the recommended conditions in the Certificate of Analysis.



BIOLOGICAL ACTIVITY

Description

(R)-MALT1-IN-3 (compound 121) is a potent MALT1 protease inhibitor with an IC₅₀ of 20 nM. (R)-MALT1-IN-3 has IC₅₀ of 60 nM, 40 nM for human IL6/IL10 in OCI-LY3 cells, respectively^[1].

REFERENCES

[1]. Johannes Wilhelmus J Thuring, et al. Pyridine rings containing derivatives as malt1 inhibitors

Caution: Product has not been fully validated for medical applications. For research use only.

Tel: 609-228-6898

Fax: 609-228-5909

E-mail: tech@MedChemExpress.com

Address: 1 Deer Park Dr, Suite Q, Monmouth Junction, NJ 08852, USA