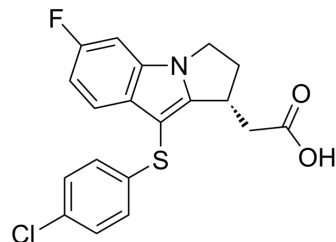


## (R)-L 888607

Cat. No.:	HY-111271B
CAS No.:	2446042-90-4
Molecular Formula:	C <sub>19</sub> H <sub>15</sub> ClFNO <sub>2</sub> S
Molecular Weight:	375.84
Target:	Others
Pathway:	Others
Storage:	4°C, stored under nitrogen * In solvent : -80°C, 6 months; -20°C, 1 month (stored under nitrogen)



### SOLVENT & SOLUBILITY

#### In Vitro

DMSO : ≥ 100 mg/mL (266.07 mM)  
\* "≥" means soluble, but saturation unknown.

Preparing Stock Solutions	Solvent Concentration	Mass	1 mg	5 mg	10 mg
		1 mM	2.6607 mL	13.3035 mL	26.6071 mL
	5 mM	0.5321 mL	2.6607 mL	5.3214 mL	
	10 mM	0.2661 mL	1.3304 mL	2.6607 mL	

Please refer to the solubility information to select the appropriate solvent.

### BIOLOGICAL ACTIVITY

#### Description

(R)-L 888607 is the inactive isomer of L 888607 (HY-111271), and can be used as an experimental control. L 888607 is a potent, selective, stable and orally active CRTH2 agonist. L 888607 has high affinity for the human CRTH2 receptor with a K<sub>i</sub> value of 4 nM. L 888607 can be used for the research of several physiological events and metabolite<sup>[1]</sup>.

### REFERENCES

[1]. Gervais FG, Identification of a potent and selective synthetic agonist at the CRTH2 receptor. Mol Pharmacol. 2005 Jun;67(6):1834-9.

**Caution: Product has not been fully validated for medical applications. For research use only.**

Tel: 609-228-6898

Fax: 609-228-5909

E-mail: tech@MedChemExpress.com

Address: 1 Deer Park Dr, Suite Q, Monmouth Junction, NJ 08852, USA