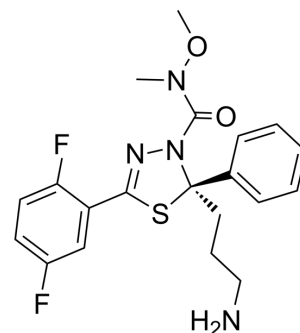


(R)-Filanesib

Cat. No.:	HY-15187A		
CAS No.:	885060-08-2		
Molecular Formula:	C ₂₀ H ₂₂ F ₂ N ₄ O ₂ S		
Molecular Weight:	420.48		
Target:	Kinesin		
Pathway:	Cell Cycle/DNA Damage; Cytoskeleton		
Storage:	Powder	-20°C	3 years
		4°C	2 years
	In solvent	-80°C	2 years
		-20°C	1 year



SOLVENT & SOLUBILITY

In Vitro

DMSO : ≥ 100 mg/mL (237.82 mM)
 * "≥" means soluble, but saturation unknown.

Preparing Stock Solutions	Solvent Concentration	Mass		
		1 mg	5 mg	10 mg
	1 mM	2.3782 mL	11.8912 mL	23.7823 mL
	5 mM	0.4756 mL	2.3782 mL	4.7565 mL
	10 mM	0.2378 mL	1.1891 mL	2.3782 mL

Please refer to the solubility information to select the appropriate solvent.

In Vivo

- Add each solvent one by one: 10% DMSO >> 40% PEG300 >> 5% Tween-80 >> 45% saline
 Solubility: ≥ 3.75 mg/mL (8.92 mM); Clear solution
- Add each solvent one by one: 10% DMSO >> 90% corn oil
 Solubility: ≥ 3.75 mg/mL (8.92 mM); Clear solution

BIOLOGICAL ACTIVITY

Description

(R)-Filanesib ((R)-ARRY-520) is the R-enantiomer of Filanesib (HY-15187). Filanesib is a synthetic kinesin spindle protein (KSP) inhibitor with an IC₅₀ of 6 nM.

Caution: Product has not been fully validated for medical applications. For research use only.

Tel: 609-228-6898

Fax: 609-228-5909

E-mail: tech@MedChemExpress.com

Address: 1 Deer Park Dr, Suite Q, Monmouth Junction, NJ 08852, USA