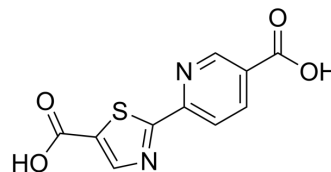


## PythiDC

Cat. No.:	HY-103070		
CAS No.:	1821370-71-1		
Molecular Formula:	C <sub>10</sub> H <sub>6</sub> N <sub>2</sub> O <sub>4</sub> S		
Molecular Weight:	250.23		
Target:	MMP		
Pathway:	Metabolic Enzyme/Protease		
Storage:	Powder	-20°C	3 years
		4°C	2 years
	In solvent	-80°C	6 months
		-20°C	1 month



### SOLVENT & SOLUBILITY

#### In Vitro

DMSO : 4.9 mg/mL (19.58 mM; ultrasonic and warming and adjust pH to 4 with HCl and heat to 60°C)

Concentration	Mass		
	1 mg	5 mg	10 mg
1 mM	3.9963 mL	19.9816 mL	39.9632 mL
5 mM	0.7993 mL	3.9963 mL	7.9926 mL
10 mM	0.3996 mL	1.9982 mL	3.9963 mL

Please refer to the solubility information to select the appropriate solvent.

### BIOLOGICAL ACTIVITY

#### Description

PythiDC is a selective collagen prolyl 4-hydroxylase (CP4H1) inhibitor with an IC<sub>50</sub> value of 4.0 μM. PythiDC can be used as a CP4H probe and also can be used for the development of a new class of antifibrotic and antimetastatic agents<sup>[1]</sup>.

### REFERENCES

[1]. Vasta JD, et al. Selective Inhibition of Collagen Prolyl 4-Hydroxylase in Human Cells. ACS Chem Biol. 2016 Jan 15;11(1):193-9.

**Caution: Product has not been fully validated for medical applications. For research use only.**

Tel: 609-228-6898

Fax: 609-228-5909

E-mail: tech@MedChemExpress.com

Address: 1 Deer Park Dr, Suite Q, Monmouth Junction, NJ 08852, USA