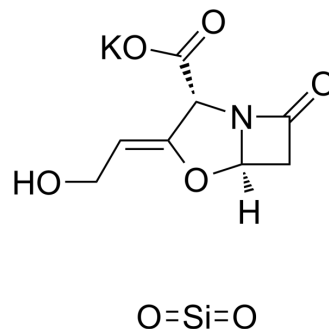


Potassium clavulanate mixture with silicon dioxide (1:1)

Cat. No.:	HY-131164
Molecular Formula:	C ₈ H ₈ KNO ₇ Si
Molecular Weight:	297.34
Target:	Antibiotic
Pathway:	Anti-infection
Storage:	Please store the product under the recommended conditions in the Certificate of Analysis.



BIOLOGICAL ACTIVITY

Description

Potassium clavulanate mixture with silicon dioxide (1:1) is a powdered mixture of 1 part Potassium clavulanate to 1 part Silicon dioxide^[1].

REFERENCES

[1]. Michael Gale Ramsey, et al. Pharmaceutical formulations comprising amoxicillin and clavulanate. WO2004110441A1.

Caution: Product has not been fully validated for medical applications. For research use only.

Tel: 609-228-6898

Fax: 609-228-5909

E-mail: tech@MedChemExpress.com

Address: 1 Deer Park Dr, Suite Q, Monmouth Junction, NJ 08852, USA