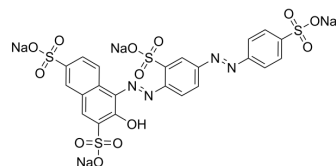


Ponceau S, BS

Cat. No.:	HY-12489A
CAS No.:	6226-79-5
Molecular Formula:	C ₂₂ H ₁₂ N ₄ Na ₄ O ₁₃ S ₄
Molecular Weight:	760.57
Target:	Biochemical Assay Reagents
Pathway:	Others
Storage:	4°C, sealed storage, away from moisture * In solvent : -80°C, 6 months; -20°C, 1 month (sealed storage, away from moisture)



SOLVENT & SOLUBILITY

In Vitro	DMSO : 50 mg/mL (65.74 mM; ultrasonic and warming and heat to 60°C)					
	H ₂ O : 50 mg/mL (65.74 mM; Need ultrasonic)					
	Preparing Stock Solutions	Solvent	Mass	1 mg	5 mg	10 mg
		Concentration				
		1 mM		1.3148 mL	6.5740 mL	13.1480 mL
5 mM			0.2630 mL	1.3148 mL	2.6296 mL	
	10 mM		0.1315 mL	0.6574 mL	1.3148 mL	
Please refer to the solubility information to select the appropriate solvent.						
In Vivo	1. Add each solvent one by one: 10% DMSO >> 90% (20% SBE-β-CD in saline) Solubility: ≥ 2.5 mg/mL (3.29 mM); Clear solution					

BIOLOGICAL ACTIVITY

Description	Both Ponceau S and Ponceau BS are synthetic dyes commonly used in biological research. They are commonly used as protein stains to visualize proteins in western blots and other protein detection analyses. Ponceau S is a red dye, while Ponceau BS is a blue shade of the same dye. Both dyes bind to positively charged amino acid residues in proteins for easy visualization. However, Ponceau S is more commonly used due to its higher sensitivity.
In Vitro	Ponceau S, BS is a biochemical reagent that can be used as a biological material or organic compound for life science related research. MCE has not independently confirmed the accuracy of these methods. They are for reference only.

Caution: Product has not been fully validated for medical applications. For research use only.

Tel: 609-228-6898

Fax: 609-228-5909

E-mail: tech@MedChemExpress.com

Address: 1 Deer Park Dr, Suite Q, Monmouth Junction, NJ 08852, USA