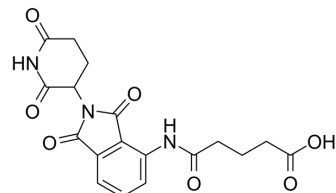


## Pomalidomide-amido-C3-COOH

Cat. No.:	HY-131185		
CAS No.:	2162120-77-4		
Molecular Formula:	C <sub>18</sub> H <sub>17</sub> N <sub>3</sub> O <sub>7</sub>		
Molecular Weight:	387.34		
Target:	E3 Ligase Ligand-Linker Conjugates		
Pathway:	PROTAC		
Storage:	Powder	-20°C	3 years
		4°C	2 years
	In solvent	-80°C	6 months
		-20°C	1 month



### SOLVENT & SOLUBILITY

In Vitro	DMSO : 10 mg/mL (25.82 mM; ultrasonic and warming and heat to 60°C)				
		Solvent Concentration	Mass 1 mg	5 mg	10 mg
	Preparing Stock Solutions	1 mM	2.5817 mL	12.9086 mL	25.8171 mL
		5 mM	0.5163 mL	2.5817 mL	5.1634 mL
10 mM		0.2582 mL	1.2909 mL	2.5817 mL	
Please refer to the solubility information to select the appropriate solvent.					
In Vivo	1. Add each solvent one by one: 10% DMSO >> 40% PEG300 >> 5% Tween-80 >> 45% saline Solubility: ≥ 1 mg/mL (2.58 mM); Clear solution				
	2. Add each solvent one by one: 10% DMSO >> 90% (20% SBE-β-CD in saline) Solubility: ≥ 1 mg/mL (2.58 mM); Clear solution				
	3. Add each solvent one by one: 10% DMSO >> 90% corn oil Solubility: ≥ 1 mg/mL (2.58 mM); Clear solution				

### BIOLOGICAL ACTIVITY

Description	Pomalidomide-amido-C3-COOH is a synthesized E3 ligase ligand-linker conjugate that incorporates the Pomalidomide based cereblon ligand and a linker used in PROTAC technology.
IC <sub>50</sub> & Target	Cereblon

---

**Caution: Product has not been fully validated for medical applications. For research use only.**

Tel: 609-228-6898

Fax: 609-228-5909

E-mail: [tech@MedChemExpress.com](mailto:tech@MedChemExpress.com)

Address: 1 Deer Park Dr, Suite Q, Monmouth Junction, NJ 08852, USA