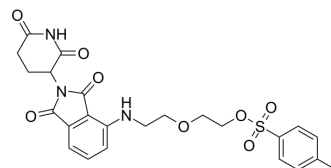


## Pomalidomide-PEG2-Tos

Cat. No.:	HY-130295
CAS No.:	2599846-07-6
Molecular Formula:	C <sub>24</sub> H <sub>25</sub> N <sub>3</sub> O <sub>8</sub> S
Molecular Weight:	515.54
Target:	E3 Ligase Ligand-Linker Conjugates
Pathway:	PROTAC
Storage:	Please store the product under the recommended conditions in the Certificate of Analysis.



### BIOLOGICAL ACTIVITY

Description	Pomalidomide-PEG2-Tos is an E3 ligase ligand-linker conjugates, composed of a cereblon ligand and two-unit PEG linker <sup>[1]</sup> .
IC <sub>50</sub> & Target	Cereblon

### REFERENCES

[1]. Su S, et al. Potent and Preferential Degradation of CDK6 via Proteolysis Targeting Chimera Degraders. J Med Chem. 2019 Aug 22;62(16):7575-7582.

**Caution: Product has not been fully validated for medical applications. For research use only.**

Tel: 609-228-6898

Fax: 609-228-5909

E-mail: tech@MedChemExpress.com

Address: 1 Deer Park Dr, Suite Q, Monmouth Junction, NJ 08852, USA