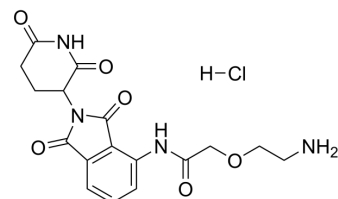


Pomalidomide-PEG1-NH2 hydrochloride

Cat. No.:	HY-136772
CAS No.:	2380273-67-4
Molecular Formula:	C ₁₇ H ₁₉ ClN ₄ O ₆
Molecular Weight:	410.81
Target:	E3 Ligase Ligand-Linker Conjugates
Pathway:	PROTAC
Storage:	-20°C, sealed storage, away from moisture * In solvent : -80°C, 6 months; -20°C, 1 month (sealed storage, away from moisture)



SOLVENT & SOLUBILITY

In Vitro

DMSO : 62.5 mg/mL (152.14 mM; Need ultrasonic)

Concentration	Mass			
	1 mg	5 mg	10 mg	
1 mM	2.4342 mL	12.1711 mL	24.3422 mL	
5 mM	0.4868 mL	2.4342 mL	4.8684 mL	
10 mM	0.2434 mL	1.2171 mL	2.4342 mL	

Please refer to the solubility information to select the appropriate solvent.

BIOLOGICAL ACTIVITY

Description

Pomalidomide-PEG1-NH2 hydrochloride is a crosslinker-E3 ligase ligand conjugate, consisting of an E3 ligase ligand pomalidomide and a PEGylated crosslinker with terminal amine for reactivity with a carboxyl group on the target ligand^[1].

REFERENCES

[1]. Lee B, et al. Synthesis and discovery of the first potent proteolysis targeting chimaera (PROTAC) degrader of AIMP2-DX2 as a lung cancer drug. J Enzyme Inhib Med Chem. 2023 Dec;38(1):51-66.

Caution: Product has not been fully validated for medical applications. For research use only.

Tel: 609-228-6898

Fax: 609-228-5909

E-mail: tech@MedChemExpress.com

Address: 1 Deer Park Dr, Suite Q, Monmouth Junction, NJ 08852, USA