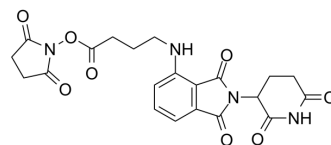


Pomalidomide-C3-NHS ester

Cat. No.:	HY-148142
CAS No.:	2828476-87-3
Molecular Formula:	C ₂₁ H ₂₀ N ₄ O ₈
Molecular Weight:	456.41
Target:	E3 Ligase Ligand-Linker Conjugates
Pathway:	PROTAC
Storage:	Please store the product under the recommended conditions in the Certificate of Analysis.



BIOLOGICAL ACTIVITY

Description	Pomalidomide-C3-NHS ester is a synthesized E3 ligase ligand-linker conjugate, incorporating the Pomalidomide based cereblon ligand and NHS ester linker.
IC ₅₀ & Target	Cereblon

Caution: Product has not been fully validated for medical applications. For research use only.

Tel: 609-228-6898

Fax: 609-228-5909

E-mail: tech@MedChemExpress.com

Address: 1 Deer Park Dr, Suite Q, Monmouth Junction, NJ 08852, USA