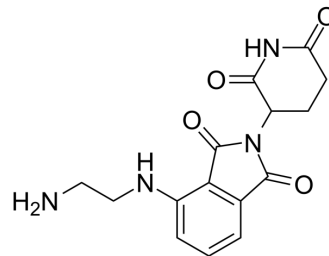


## Pomalidomide-C2-NH2

|                    |  |
|--------------------|--|
| Cat. No.:          | HY-128846  |
| CAS No.:           | 1957235-66-3   |
| Molecular Formula: | C <sub>15</sub> H <sub>16</sub> N <sub>4</sub> O <sub>4</sub>                                  |
| Molecular Weight:  | 316.31   |
| Target:            | E3 Ligase Ligand-Linker Conjugates   |
| Pathway:           | PROTAC   |
| Storage:           | 4°C, protect from light<br>* In solvent : -80°C, 6 months; -20°C, 1 month (protect from light) |



### BIOLOGICAL ACTIVITY

|                           |   |
|---------------------------|---|
| Description               | Pomalidomide-C2-NH2 is a synthesized E3 ligase ligand-linker conjugate that incorporates the Pomalidomide based cereblon ligand and a PEG linker used in PROTAC technology. |
| IC <sub>50</sub> & Target | Cereblon  |

### REFERENCES

[1]. Shibata N, et al. Development of Protein Degradation Inducers of Androgen Receptor by Conjugation of Androgen Receptor Ligands and Inhibitor of Apoptosis Protein Ligands. J Med Chem. 2018 Jan 25;61(2):543-575.

**Caution: Product has not been fully validated for medical applications. For research use only.**

Tel: 609-228-6898

Fax: 609-228-5909

E-mail: tech@MedChemExpress.com

Address: 1 Deer Park Dr, Suite Q, Monmouth Junction, NJ 08852, USA