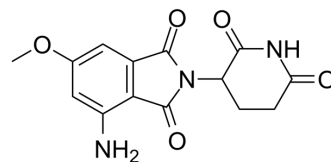


Pomalidomide-6-O-CH3

Cat. No.:	HY-139542
CAS No.:	1547163-08-5
Molecular Formula:	C ₁₄ H ₁₃ N ₃ O ₅
Molecular Weight:	303.27
Target:	Ligands for E3 Ligase
Pathway:	PROTAC
Storage:	Please store the product under the recommended conditions in the Certificate of Analysis.



BIOLOGICAL ACTIVITY

Description	Pomalidomide-6-O-CH3 is the Pomalidomide-based cereblon (CRBN) ligand used in the recruitment of CRBN protein. Pomalidomide-6-O-CH3 can be connected to the ligand for protein by a linker to form PROTAC ^[1] .
IC ₅₀ & Target	Cereblon
In Vitro	PROTACs contain two different ligands connected by a linker; one is a ligand for an E3 ubiquitin ligase and the other is for the target protein. PROTACs exploit the intracellular ubiquitin-proteasome system to selectively degrade target proteins ^[1] . MCE has not independently confirmed the accuracy of these methods. They are for reference only.

REFERENCES

[1]. Andrew J. Phillips, et al. Bromodomain targeting degronomers for target protein degradation. WO2017197056A1.

Caution: Product has not been fully validated for medical applications. For research use only.

Tel: 609-228-6898

Fax: 609-228-5909

E-mail: tech@MedChemExpress.com

Address: 1 Deer Park Dr, Suite Q, Monmouth Junction, NJ 08852, USA