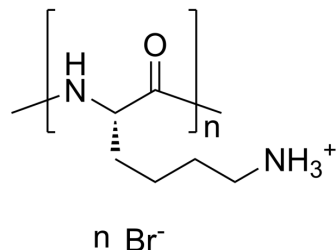


Poly-L-lysine hydrobromide (MW 70000-150000)

Cat. No.:	HY-126437B
CAS No.:	25988-63-0
Molecular Formula:	C ₈ H ₁₉ BrN ₂ O
Target:	Biochemical Assay Reagents
Pathway:	Others
Storage:	-20°C, sealed storage, away from moisture * In solvent : -80°C, 6 months; -20°C, 1 month (sealed storage, away from moisture)



BIOLOGICAL ACTIVITY

Description

Poly-L-lysine (hydrobromide) (MW 70000-150000), a positively charged amino acid polymer, is a nonspecific attachment factor for cells. Poly-L-lysine (hydrobromide) (MW 70000-150000) has good biocompatibility. Poly-L-lysine (hydrobromide) (MW 70000-150000) is used to increase cell adhesion to solid substrates by enhancing electrostatic interaction between negatively charged ions of the cell membrane and the culture surface^[1].

REFERENCES

[1]. Ceron J, et, al. A primary cell culture of *Drosophila* postembryonic larval neuroblasts to study cell cycle and asymmetric division. *Eur J Cell Biol.* 2006 Jun;85(6):567-75.

Caution: Product has not been fully validated for medical applications. For research use only.

Tel: 609-228-6898

Fax: 609-228-5909

E-mail: tech@MedChemExpress.com

Address: 1 Deer Park Dr, Suite Q, Monmouth Junction, NJ 08852, USA