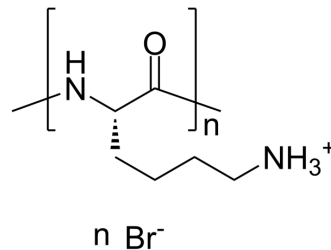


## Poly-L-lysine hydrobromide (MW 30000-70000)

Cat. No.:	HY-126437
CAS No.:	25988-63-0
Molecular Formula:	C <sub>8</sub> H <sub>19</sub> BrN <sub>2</sub> O
Target:	Others
Pathway:	Others
Storage:	-20°C, protect from light, stored under nitrogen * In solvent : -80°C, 6 months; -20°C, 1 month (protect from light, stored under nitrogen)



### SOLVENT & SOLUBILITY

In Vitro	H <sub>2</sub> O : 100 mg/mL (Need ultrasonic)
----------	--

### BIOLOGICAL ACTIVITY

Description	Poly-L-lysine hydrobromide (MW 30000-70000) is a water-soluble synthetic polypeptide <sup>[1]</sup> .
-------------	---

### CUSTOMER VALIDATION

- Sci Adv. 2023 Jun 2;9(22):eadg3365.

See more customer validations on [www.MedChemExpress.com](http://www.MedChemExpress.com)

### REFERENCES

[1]. Archishman Ghosh, et al. Three archetypical classes of macromolecular regulators of protein liquid-liquid phase separation. Proc Natl Acad Sci U S A. 2019;116(39):19474-19483.

**Caution: Product has not been fully validated for medical applications. For research use only.**

Tel: 609-228-6898

Fax: 609-228-5909

E-mail: [tech@MedChemExpress.com](mailto:tech@MedChemExpress.com)

Address: 1 Deer Park Dr, Suite Q, Monmouth Junction, NJ 08852, USA