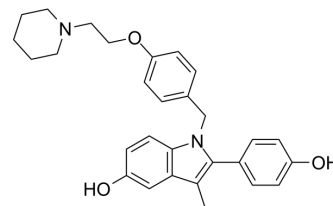


## Pipendoxifene

<b>Cat. No.:</b>	HY-13724
<b>CAS No.:</b>	198480-55-6
<b>Molecular Formula:</b>	C <sub>29</sub> H <sub>32</sub> N <sub>2</sub> O <sub>3</sub>
<b>Molecular Weight:</b>	456.58
<b>Target:</b>	Estrogen Receptor/ERR
<b>Pathway:</b>	Vitamin D Related/Nuclear Receptor
<b>Storage:</b>	4°C, sealed storage, away from moisture * In solvent : -80°C, 6 months; -20°C, 1 month (sealed storage, away from moisture)



### SOLVENT & SOLUBILITY

#### In Vitro

DMSO : 100 mg/mL (219.02 mM; Need ultrasonic)

Preparing Stock Solutions	Solvent Concentration	Mass		
		1 mg	5 mg	10 mg
	1 mM	2.1902 mL	10.9510 mL	21.9020 mL
	5 mM	0.4380 mL	2.1902 mL	4.3804 mL
	10 mM	0.2190 mL	1.0951 mL	2.1902 mL

Please refer to the solubility information to select the appropriate solvent.

### BIOLOGICAL ACTIVITY

#### Description

Pipendoxifene is a selective estrogen receptor modulator (SERM).

#### IC<sub>50</sub> & Target

Estrogen receptor<sup>[1]</sup>

#### In Vitro

Pipendoxifene is a new 2-phenyl indole selective estrogen receptor modulators (SERM) that exhibits an excellent preclinical pharmacological profile and is selected for further development as a treatment for metastatic breast cancer<sup>[1]</sup>. MCE has not independently confirmed the accuracy of these methods. They are for reference only.

### REFERENCES

[1]. Shelly W, et al. Selective estrogen receptor modulators: an update on recent clinical findings. *Obstet Gynecol Surv.* 2008 Mar;63(3):163-81.

---

**Caution: Product has not been fully validated for medical applications. For research use only.**

Tel: 609-228-6898

Fax: 609-228-5909

E-mail: [tech@MedChemExpress.com](mailto:tech@MedChemExpress.com)

Address: 1 Deer Park Dr, Suite Q, Monmouth Junction, NJ 08852, USA