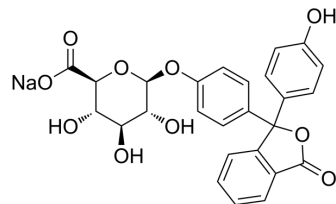


Phenolphthalein glucuronide sodium

Cat. No.:	HY-137426A
CAS No.:	6820-54-8
Molecular Formula:	C ₂₆ H ₂₁ NaO ₁₀
Molecular Weight:	516.43
Target:	Biochemical Assay Reagents
Pathway:	Others
Storage:	Please store the product under the recommended conditions in the Certificate of Analysis.



BIOLOGICAL ACTIVITY

Description

Phenolphthalein glucuronide sodium is a substrate to determine the β -glucuronidase^[1].

REFERENCES

[1]. Wu X, et, al. Sensitive method for the quantification of beta-glucuronidase activity in human urine using capillary electrophoresis with fluorescence detection. J Chromatogr B Biomed Sci Appl. 1998 Apr 24;708(1-2):61-6.

Caution: Product has not been fully validated for medical applications. For research use only.

Tel: 609-228-6898

Fax: 609-228-5909

E-mail: tech@MedChemExpress.com

Address: 1 Deer Park Dr, Suite Q, Monmouth Junction, NJ 08852, USA