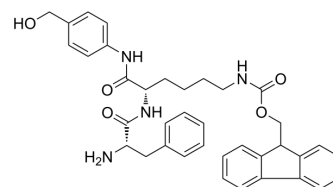


Phe-Lys(Fmoc)-PAB

Cat. No.:	HY-129362	
CAS No.:	2149584-03-0	
Molecular Formula:	C ₃₇ H ₄₀ N ₄ O ₅	
Molecular Weight:	620.74	
Target:	ADC Linker	
Pathway:	Antibody-drug Conjugate/ADC Related	
Storage:	Powder	-20°C 3 years
	In solvent	-80°C 6 months
		-20°C 1 month



SOLVENT & SOLUBILITY

In Vitro	DMSO : 100 mg/mL (161.10 mM; Need ultrasonic)				
		Solvent Concentration	Mass		
	Preparing Stock Solutions		1 mg	5 mg	10 mg
		1 mM	1.6110 mL	8.0549 mL	16.1098 mL
		5 mM	0.3222 mL	1.6110 mL	3.2220 mL
	10 mM	0.1611 mL	0.8055 mL	1.6110 mL	
Please refer to the solubility information to select the appropriate solvent.					
In Vivo	1. Add each solvent one by one: 10% DMSO >> 40% PEG300 >> 5% Tween-80 >> 45% saline Solubility: ≥ 2.5 mg/mL (4.03 mM); Clear solution				
	2. Add each solvent one by one: 10% DMSO >> 90% (20% SBE-β-CD in saline) Solubility: ≥ 2.5 mg/mL (4.03 mM); Clear solution				
	3. Add each solvent one by one: 10% DMSO >> 90% corn oil Solubility: ≥ 2.5 mg/mL (4.03 mM); Clear solution				

BIOLOGICAL ACTIVITY

Description	Phe-Lys(Fmoc)-PAB is a cathepsin cleavable ADC linker used for the antibody-drug conjugates (ADCs) ^[1] .	
IC ₅₀ & Target	Cleavable	Protease Cleavable

REFERENCES

Caution: Product has not been fully validated for medical applications. For research use only.

Tel: 609-228-6898

Fax: 609-228-5909

E-mail: tech@MedChemExpress.com

Address: 1 Deer Park Dr, Suite Q, Monmouth Junction, NJ 08852, USA