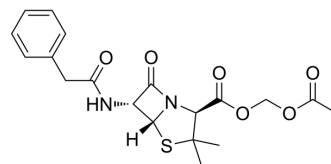


## Penamecillin

Cat. No.:	HY-111988
CAS No.:	983-85-7
Molecular Formula:	C <sub>19</sub> H <sub>22</sub> N <sub>2</sub> O <sub>6</sub> S
Molecular Weight:	406.45
Target:	Bacterial
Pathway:	Anti-infection
Storage:	Please store the product under the recommended conditions in the Certificate of Analysis.



### BIOLOGICAL ACTIVITY

Description	Penamecillin (Wy 20788) an acetoxyethyl ester of <a href="#">Penicillin G</a> (HY-N7139). Penamecillin is an orally active antibacterial agent <sup>[1][2]</sup> .
In Vivo	Penamecillin (15 mg/kg, p.o.) is absorbed by 10% in dogs <sup>[2]</sup> . MCE has not independently confirmed the accuracy of these methods. They are for reference only.

### REFERENCES

- [1]. Elek E, et al. Passage of penicillins from mother to foetus in humans. *Int J Clin Pharmacol*. 1972 Aug;6(3):223-8.
- [2]. Gibaldi M, et al. The pharmacokinetics of penamecillin. *Br J Pharmacol Chemother*. 1966 Dec;28(3):360-6.

**Caution: Product has not been fully validated for medical applications. For research use only.**

Tel: 609-228-6898

Fax: 609-228-5909

E-mail: [tech@MedChemExpress.com](mailto:tech@MedChemExpress.com)

Address: 1 Deer Park Dr, Suite Q, Monmouth Junction, NJ 08852, USA