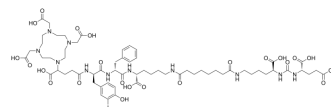


## PSMA I&T

<b>Cat. No.:</b>	HY-148761
<b>CAS No.:</b>	2192281-54-0
<b>Molecular Formula:</b>	C <sub>63</sub> H <sub>92</sub> IN <sub>11</sub> O <sub>23</sub>
<b>Molecular Weight:</b>	1498
<b>Target:</b>	Others
<b>Pathway:</b>	Others
<b>Storage:</b>	-20°C, sealed storage, away from moisture * In solvent : -80°C, 6 months; -20°C, 1 month (sealed storage, away from moisture)



## SOLVENT & SOLUBILITY

<b>In Vitro</b>	DMSO : 100 mg/mL (66.76 mM); ultrasonic and warming and heat to 60°C)					
	<b>Preparing Stock Solutions</b>	<b>Solvent Concentration</b>	<b>Mass</b>	<b>1 mg</b>	<b>5 mg</b>	<b>10 mg</b>
		<b>1 mM</b>		0.6676 mL	3.3378 mL	6.6756 mL
		<b>5 mM</b>		0.1335 mL	0.6676 mL	1.3351 mL
		<b>10 mM</b>		0.0668 mL	0.3338 mL	0.6676 mL
Please refer to the solubility information to select the appropriate solvent.						
<b>In Vivo</b>	<ol style="list-style-type: none"> <li>Add each solvent one by one: 10% DMSO &gt;&gt; 40% PEG300 &gt;&gt; 5% Tween-80 &gt;&gt; 45% saline Solubility: ≥ 1.25 mg/mL (0.83 mM); Clear solution</li> <li>Add each solvent one by one: 10% DMSO &gt;&gt; 90% (20% SBE-β-CD in saline) Solubility: ≥ 1.25 mg/mL (0.83 mM); Clear solution</li> <li>Add each solvent one by one: 10% DMSO &gt;&gt; 90% corn oil Solubility: ≥ 1.25 mg/mL (0.83 mM); Clear solution</li> </ol>					

## BIOLOGICAL ACTIVITY

<b>Description</b>	PSMA I&T is a potent PSMA (prostate-specific membrane antigen) inhibitor. PSMA I&T can be used for SPECT/CT imaging and radionuclide research of prostate cancer (PCa) <sup>[1]</sup> .
<b>IC<sub>50</sub> &amp; Target</b>	PSMA <sup>[1]</sup>

## REFERENCES

---

[1]. Chatalic KL, et al. Towards Personalized Treatment of Prostate Cancer: PSMA I&T, a Promising Prostate-Specific Membrane Antigen-Targeted Theranostic Agent. *Theranostics*. 2016 Apr 12;6(6):849-61.

---

**Caution: Product has not been fully validated for medical applications. For research use only.**

Tel: 609-228-6898

Fax: 609-228-5909

E-mail: [tech@MedChemExpress.com](mailto:tech@MedChemExpress.com)

Address: 1 Deer Park Dr, Suite Q, Monmouth Junction, NJ 08852, USA