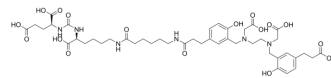


PSMA-11

Cat. No.:	HY-125399
CAS No.:	1366302-52-4
Molecular Formula:	C ₄₄ H ₆₂ N ₆ O ₁₇
Molecular Weight:	946.99
Target:	PSMA
Pathway:	Immunology/Inflammation
Storage:	-20°C, protect from light * In solvent : -80°C, 6 months; -20°C, 1 month (protect from light)



SOLVENT & SOLUBILITY

In Vitro	DMSO : 100 mg/mL (105.60 mM; Need ultrasonic)				
	Preparing Stock Solutions	Solvent Concentration \ Mass	1 mg	5 mg	10 mg
		1 mM	1.0560 mL	5.2799 mL	10.5598 mL
		5 mM	0.2112 mL	1.0560 mL	2.1120 mL
		10 mM	0.1056 mL	0.5280 mL	1.0560 mL
Please refer to the solubility information to select the appropriate solvent.					
In Vivo	<ol style="list-style-type: none"> Add each solvent one by one: 10% DMSO >> 40% PEG300 >> 5% Tween-80 >> 45% saline Solubility: ≥ 2.5 mg/mL (2.64 mM); Clear solution Add each solvent one by one: 10% DMSO >> 90% (20% SBE-β-CD in saline) Solubility: ≥ 2.5 mg/mL (2.64 mM); Clear solution Add each solvent one by one: 10% DMSO >> 90% corn oil Solubility: ≥ 2.5 mg/mL (2.64 mM); Clear solution 				

BIOLOGICAL ACTIVITY

Description	PSMA-11 is a positron emission tomography (PET) tracer. PSMA-11 detects prostate cancer relapses and metastases by binding to the extracellular domain of prostate-specific membrane antigen (PSMA) ^[1] .
-------------	--

REFERENCES

[1]. Demirci E, et al. Normal distribution pattern and physiological variants of 68Ga-PSMA-11 PET/CT imaging. Nucl Med Commun. 2016 Nov;37(11):1169-79.

Caution: Product has not been fully validated for medical applications. For research use only.

Tel: 609-228-6898

Fax: 609-228-5909

E-mail: tech@MedChemExpress.com

Address: 1 Deer Park Dr, Suite Q, Monmouth Junction, NJ 08852, USA