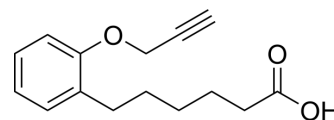


PPOH

Cat. No.:	HY-119647
CAS No.:	206052-01-9
Molecular Formula:	C ₁₅ H ₁₈ O ₃
Molecular Weight:	246.3
Target:	COX; Cytochrome P450
Pathway:	Immunology/Inflammation; Metabolic Enzyme/Protease
Storage:	4°C, sealed storage, away from moisture and light * In solvent : -80°C, 6 months; -20°C, 1 month (sealed storage, away from moisture and light)



SOLVENT & SOLUBILITY

In Vitro	DMSO : 100 mg/mL (406.01 mM; Need ultrasonic)				
		Solvent Concentration	Mass		
	Preparing Stock Solutions		1 mg	5 mg	10 mg
		1 mM	4.0601 mL	20.3004 mL	40.6009 mL
		5 mM	0.8120 mL	4.0601 mL	8.1202 mL
	10 mM	0.4060 mL	2.0300 mL	4.0601 mL	
Please refer to the solubility information to select the appropriate solvent.					
In Vivo	1. Add each solvent one by one: 10% DMSO >> 90% (20% SBE-β-CD in saline) Solubility: ≥ 2.5 mg/mL (10.15 mM); Clear solution 2. Add each solvent one by one: 10% DMSO >> 90% corn oil Solubility: ≥ 2.5 mg/mL (10.15 mM); Clear solution				

BIOLOGICAL ACTIVITY

Description	PPOH, a fatty acid derivative, is a selective cyclooxygenase (COX) inhibitor that inhibits arachidonic acid cyclooxygenase activity in renal cortical microsomes. In addition, PPOH acts on CYP4A2 and CYP4A3 with the IC ₅₀ values of 22 μM and 6.5 μM, respectively ^[1] . PPOH is a click chemistry reagent, it contains an Alkyne group and can undergo copper-catalyzed azide-alkyne cycloaddition (CuAAC) with molecules containing Azide groups.
In Vitro	PPOH (5 μM) can inhibit CYP2C9 activity by 63 and 90%, respectively, in the absence and presence of the 30-min NADPH preincubation and 63% when the 30-min preincubation omitted NADPH ^[1] . MCE has not independently confirmed the accuracy of these methods. They are for reference only.

REFERENCES

[1]. Melissa A VanAlstine, et al. Effects of acetylenic epoxygenase inhibitors on recombinant cytochrome p450s. Drug Metab Dispos. 2011 Jul;39(7):1221-6.

Caution: Product has not been fully validated for medical applications. For research use only.

Tel: 609-228-6898

Fax: 609-228-5909

E-mail: tech@MedChemExpress.com

Address: 1 Deer Park Dr, Suite Q, Monmouth Junction, NJ 08852, USA