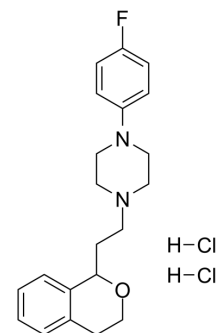


PNU-96415E

Cat. No.:	HY-103404
CAS No.:	170856-41-4
Molecular Formula:	C ₂₁ H ₂₇ Cl ₂ FN ₂ O
Molecular Weight:	413.36
Target:	Dopamine Receptor; 5-HT Receptor
Pathway:	GPCR/G Protein; Neuronal Signaling
Storage:	Please store the product under the recommended conditions in the Certificate of Analysis.



BIOLOGICAL ACTIVITY

Description	PNU-96415E is a selective D ₄ /5-HT _{2A} antagonist. PNU-96415E may have potential antipsychotic efficacy ^[1] .	
IC ₅₀ & Target	D ₄ Receptor	5-HT _{2A} Receptor
In Vivo	PNU-96415E blocks 5-HTP-induced bead twitches in mice and stereotypic behaviours produced by high doses of amphetamine and methylphenidate ^[1] . MCE has not independently confirmed the accuracy of these methods. They are for reference only.	

REFERENCES

[1]. Kulkarni SK, et al. Dopamine D₄ receptors and development of newer antipsychotic drugs. *Fundam Clin Pharmacol.* 2000;14(6):529-539.

Caution: Product has not been fully validated for medical applications. For research use only.

Tel: 609-228-6898

Fax: 609-228-5909

E-mail: tech@MedChemExpress.com

Address: 1 Deer Park Dr, Suite Q, Monmouth Junction, NJ 08852, USA