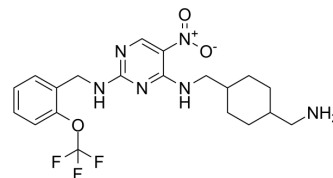


## PKC-theta inhibitor

<b>Cat. No.:</b>	HY-112681		
<b>CAS No.:</b>	736048-65-0		
<b>Molecular Formula:</b>	C <sub>20</sub> H <sub>25</sub> F <sub>3</sub> N <sub>6</sub> O <sub>3</sub>		
<b>Molecular Weight:</b>	454.45		
<b>Target:</b>	PKC		
<b>Pathway:</b>	Epigenetics; TGF-beta/Smad		
<b>Storage:</b>	Powder	-20°C	3 years
		4°C	2 years
	In solvent	-80°C	2 years
		-20°C	1 year



### SOLVENT & SOLUBILITY

#### In Vitro

DMSO : 62.5 mg/mL (137.53 mM; Need ultrasonic)

Concentration	Solvent	Mass		
		1 mg	5 mg	10 mg
Preparing Stock Solutions	1 mM	2.2005 mL	11.0023 mL	22.0046 mL
	5 mM	0.4401 mL	2.2005 mL	4.4009 mL
	10 mM	0.2200 mL	1.1002 mL	2.2005 mL

Please refer to the solubility information to select the appropriate solvent.

#### In Vivo

- Add each solvent one by one: 10% DMSO >> 40% PEG300 >> 5% Tween-80 >> 45% saline  
Solubility: ≥ 2.5 mg/mL (5.50 mM); Clear solution
- Add each solvent one by one: 10% DMSO >> 90% (20% SBE-β-CD in saline)  
Solubility: ≥ 2.5 mg/mL (5.50 mM); Clear solution
- Add each solvent one by one: 10% DMSO >> 90% corn oil  
Solubility: ≥ 2.5 mg/mL (5.50 mM); Clear solution

### BIOLOGICAL ACTIVITY

#### Description

PKC-theta inhibitor is a selective PKC-θinhibitor, with an IC<sub>50</sub> of 12 nM.

#### IC<sub>50</sub> & Target

PKCθ  
12 nM (IC<sub>50</sub>)

### REFERENCES

**Caution: Product has not been fully validated for medical applications. For research use only.**

Tel: 609-228-6898

Fax: 609-228-5909

E-mail: [tech@MedChemExpress.com](mailto:tech@MedChemExpress.com)

Address: 1 Deer Park Dr, Suite Q, Monmouth Junction, NJ 08852, USA