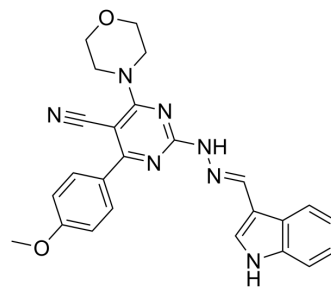


PI3K-IN-35

Cat. No.:	HY-147900
CAS No.:	2458163-99-8
Molecular Formula:	C ₂₅ H ₂₃ N ₇ O ₂
Molecular Weight:	453.5
Target:	PI3K; Apoptosis
Pathway:	PI3K/Akt/mTOR; Apoptosis
Storage:	Please store the product under the recommended conditions in the Certificate of Analysis.



BIOLOGICAL ACTIVITY

Description	PI3K-IN-35 (Compound 6l) is a highly selective PI3K inhibitor with IC ₅₀ values of 13.98, 7.22 and 10.94 μM for PI3K-α, PI3K-β and PI3K-δ, respectively. PI3K-IN-35 arrests cell cycle at G2/M phase and induces apoptosis. PI3K-IN-35 can be used in leukemia research ^[1] .										
IC₅₀ & Target	PI3Kβ 7.22 μM (IC ₅₀)	PI3Kδ 10.94 μM (IC ₅₀)	PI3Kα 13.98 μM (IC ₅₀)								
In Vitro	<p>PI3K-IN-35 (Compound 6l) (10 μM, 48 hours) possess potent antiproliferative activity can inhibit proliferation of Leukemia SR cell lines in vitro^[1].</p> <p>PI3K-IN-35 (Compound 6l) induces cell cycle arrest toward the G2-M phase (41.61%) and leads to DNA synthesis and apoptosis^[1].</p> <p>PI3K-IN-35 (Compound 6l) (10 μM, 48 hours) results in apoptotic with 16.98% of cells in the early and latest age^[1].</p> <p>MCE has not independently confirmed the accuracy of these methods. They are for reference only.</p> <p>Cell Cytotoxicity Assay^[1]</p> <table border="1"> <tr> <td>Cell Line:</td> <td>Leukemia SR cell lines.</td> </tr> <tr> <td>Concentration:</td> <td>10 μM</td> </tr> <tr> <td>Incubation Time:</td> <td>48 hours</td> </tr> <tr> <td>Result:</td> <td>Antiproliferative activity with values of 13.59 μM.</td> </tr> </table>			Cell Line:	Leukemia SR cell lines.	Concentration:	10 μM	Incubation Time:	48 hours	Result:	Antiproliferative activity with values of 13.59 μM.
Cell Line:	Leukemia SR cell lines.										
Concentration:	10 μM										
Incubation Time:	48 hours										
Result:	Antiproliferative activity with values of 13.59 μM.										

REFERENCES

[1]. Helwa AA, et al. Novel antiproliferative agents bearing morpholinopyrimidine scaffold as PI3K inhibitors and apoptosis inducers; design, synthesis and molecular docking. *Bioorg Chem.* 2020 Sep;102:104051.

Caution: Product has not been fully validated for medical applications. For research use only.

Tel: 609-228-6898

Fax: 609-228-5909

E-mail: tech@MedChemExpress.com

Address: 1 Deer Park Dr, Suite Q, Monmouth Junction, NJ 08852, USA