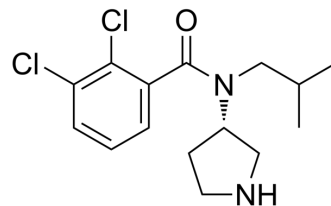


PF-184298

Cat. No.:	HY-123322
CAS No.:	813447-40-4
Molecular Formula:	C ₁₅ H ₂₀ Cl ₂ N ₂ O
Molecular Weight:	315.24
Target:	Others
Pathway:	Others
Storage:	Please store the product under the recommended conditions in the Certificate of Analysis.



BIOLOGICAL ACTIVITY

Description	PF-184298 is a dual serotonin/noradrenaline reuptake inhibitor with IC ₅₀ of 6 nM and 21 nM, respectively ^[1] .
--------------------	---

REFERENCES

[1]. Anthony Harrison , et al. Case studies addressing human pharmacokinetic uncertainty using a combination of pharmacokinetic simulation and alternative first in human paradigms. *Clinical Trial Xenobiotica*. 2012 Jan;42(1):57-74.

Caution: Product has not been fully validated for medical applications. For research use only.

Tel: 609-228-6898

Fax: 609-228-5909

E-mail: tech@MedChemExpress.com

Address: 1 Deer Park Dr, Suite Q, Monmouth Junction, NJ 08852, USA