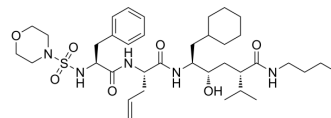


PD 134922

Cat. No.:	HY-123415
CAS No.:	150351-30-7
Molecular Formula:	C ₃₇ H ₆₁ N ₅ O ₇ S
Molecular Weight:	719.97
Target:	HIV Protease; Renin
Pathway:	Anti-infection; Metabolic Enzyme/Protease
Storage:	Please store the product under the recommended conditions in the Certificate of Analysis.



BIOLOGICAL ACTIVITY

Description	PD 134922 is a potent renin and HIV-1 protease inhibitor with an IC ₅₀ of 15 nM against HIV-1 protease ^[1] .
IC ₅₀ & Target	IC ₅₀ : 15 nM (HIV-1 protease) ^[1]

REFERENCES

[1]. Humblet CC, et al. Characterization of two structurally novel HIV-1 protease inhibitors identified by rational selection. *Antiviral Res.* 1993 May;21(1):73-84.

Caution: Product has not been fully validated for medical applications. For research use only.

Tel: 609-228-6898

Fax: 609-228-5909

E-mail: tech@MedChemExpress.com

Address: 1 Deer Park Dr, Suite Q, Monmouth Junction, NJ 08852, USA