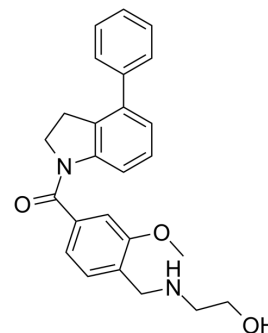


## PD-1/PD-L1-IN 6

Cat. No.:	HY-130625
CAS No.:	2393983-76-9
Molecular Formula:	C <sub>25</sub> H <sub>26</sub> N <sub>2</sub> O <sub>3</sub>
Molecular Weight:	402.49
Target:	PD-1/PD-L1
Pathway:	Immunology/Inflammation
Storage:	Please store the product under the recommended conditions in the Certificate of Analysis.



### BIOLOGICAL ACTIVITY

<b>Description</b>	PD-1/PD-L1-IN 6 (compound A13) is a potent PD-1/PD-L1 interaction inhibitor, with an IC <sub>50</sub> of 132.8 nM. PD-1/PD-L1-IN 6 exhibits outstanding immunoregulatory activity. PD-1/PD-L1-IN 6 significantly elevates interferon-γ secretion in a Hep3B/OS-8/hPD-L1 and CD3 T cell co-culture model, without significant toxic effect. PD-1/PD-L1-IN 6 restores the immune response in a T cell-tumor co-culture model <sup>[1]</sup> .
<b>IC<sub>50</sub> &amp; Target</b>	IC <sub>50</sub> : 132.8 ± 6.9 nM (PD-1/PD-L1 interaction)

### REFERENCES

[1]. Qin M, et al. Discovery of the programmed cell death-1/programmed cell death-ligand 1 interaction inhibitors bearing an indoline scaffold. Eur J Med Chem. 2020 Jan 15;186:111856.

**Caution: Product has not been fully validated for medical applications. For research use only.**

Tel: 609-228-6898

Fax: 609-228-5909

E-mail: tech@MedChemExpress.com

Address: 1 Deer Park Dr, Suite Q, Monmouth Junction, NJ 08852, USA