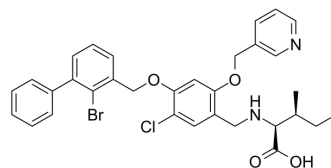


PD-1/PD-L1-IN-21

Cat. No.:	HY-145772
CAS No.:	2158336-16-2
Molecular Formula:	C ₃₂ H ₃₂ BrClN ₂ O ₄
Molecular Weight:	623.96
Target:	PD-1/PD-L1
Pathway:	Immunology/Inflammation
Storage:	Please store the product under the recommended conditions in the Certificate of Analysis.



BIOLOGICAL ACTIVITY

Description

PD-1/PD-L1-IN-21 (Example 22) is a small-molecule inhibitor of the PD-1/PD-L1 protein-protein interaction. PD-1/PD-L1-IN-21 blocks PD-1/PD-L1 with the IC₅₀ of 4.99 μM. PD-1/PD-L1-IN-21 can be used for the research of cancers, infectious diseases and autoimmune diseases^[1].

REFERENCES

[1]. Nicotiny alcohol ether derivative, preparation method therefor, and pharmaceutical composition and uses thereof. WO2017202274A1.

Caution: Product has not been fully validated for medical applications. For research use only.

Tel: 609-228-6898

Fax: 609-228-5909

E-mail: tech@MedChemExpress.com

Address: 1 Deer Park Dr, Suite Q, Monmouth Junction, NJ 08852, USA